

***ARTIFICIAL
INTELLIGENCE***

QUESTION

What is Artificial Intelligence?



HYPTOHESES

If Artificial Intelligence learns repetitive tasks, it will transform the world.

RESEARCH

What is Artificial Intelligence?

Artificial Intelligence (AI) is the ability for a computer to think and learn like humans. AI technology can process large amounts of data in ways, unlike humans.

It is a field of study in computer science that focuses on creating machines and software capable of intelligent behavior.

The goal for AI is to be able to do things such as recognize patterns, make decisions, and judge like humans.

Types of Artificial Intelligence?

There are many different types of Artificial Intelligence. The three main types are:

1. Artificial Narrow Intelligence (ANI)

- Performs specific tasks, unable to independently learn
- Examples: Siri, Alexa, playing chess, translating languages

2. Artificial General Intelligence (AGI)

- Can perform tasks much like humans
- Examples: Drone robots, Spam filters on email

3. Artificial Super Intelligence (ASI)

- Can perform any task better than humans or AGI
- Examples: Fully automated self-driving cars, Humanoid robots



The diagram features a central teal circle with a white icon of a human head profile containing a gear and circuit lines, with three teal arrows pointing right. Below this icon, the text "Types of Artificial Intelligence" is written in white. A dashed teal line connects this central circle to three smaller circles: a teal one on the left, an orange one at the bottom, and a blue one on the right. Each of these smaller circles contains a white icon: a head profile with a gear, a brain with a gear, and a brain with a gear respectively. Solid lines connect the central circle to the left and right smaller circles, and a vertical line connects the central circle to the bottom smaller circle.

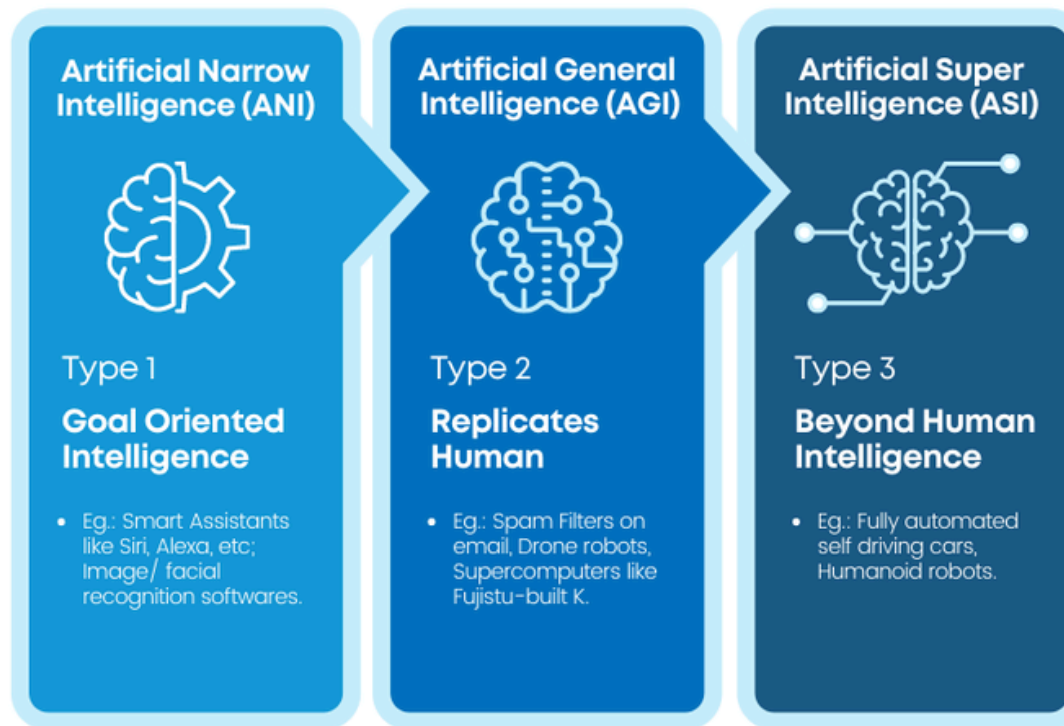
Types of Artificial Intelligence

Artificial Narrow Intelligence

Artificial Super Intelligence

Artificial General Intelligence

3 Types of Artificial Intelligence



Advantages of Artificial Intelligence?

- **Medical applications**

Better diagnostics and treatment, Robotic surgery systems

- **Perform repetitive jobs /zero risk**

Carry out dangerous task in a hazardous environment

- **Reduces human error**

Accuracy, less chance of error with AI

- **24X7 availability**

Online customer support

- **New inventions**

Self-driving cars

Advantages of Artificial Intelligence

- Reduction in Human Error-
- Reduce the Risk (Zero Risk)
- 24/7 Support-
- Perform Repetitive Jobs
- Faster decision
- New Inventions
- Digital Assistance



Disadvantages of Artificial Intelligence?

- **No ethics**

Ethics and morality difficult to incorporate into AI
Artificial Intelligence may eventually wipe out humanity

- **Unemployment (job displacement)**

Concern that low-skilled job would be taken over by AI

- **High cost**

Hardware and software must be upgraded on a regular basis

- **Lack of creativity**

AI does not have the same level of creativity as humans

- **Making human sluggish**

AI increases human dependency on machines which can lead to laziness

Disadvantages of Artificial Intelligence

- High production cost
- Risk of Unemployment
- Increasing human's laziness
- Emotionless
- Lack of creativity



PROCEDURE

- AI works by combining large data sets with automatic processing algorithms
- AI can manipulate these algorithms by learning behavior patterns within data set

How does Artificial Intelligence work?

1. Input

- Collect and define the data needed
- Input can be pictures, speech, or text

2. Processing

- Uses special algorithms (step-by-step instructions)
- Understand and make sense of the input

3. Outcomes

- Train by various examples
- Start recognizing patterns and make predictions

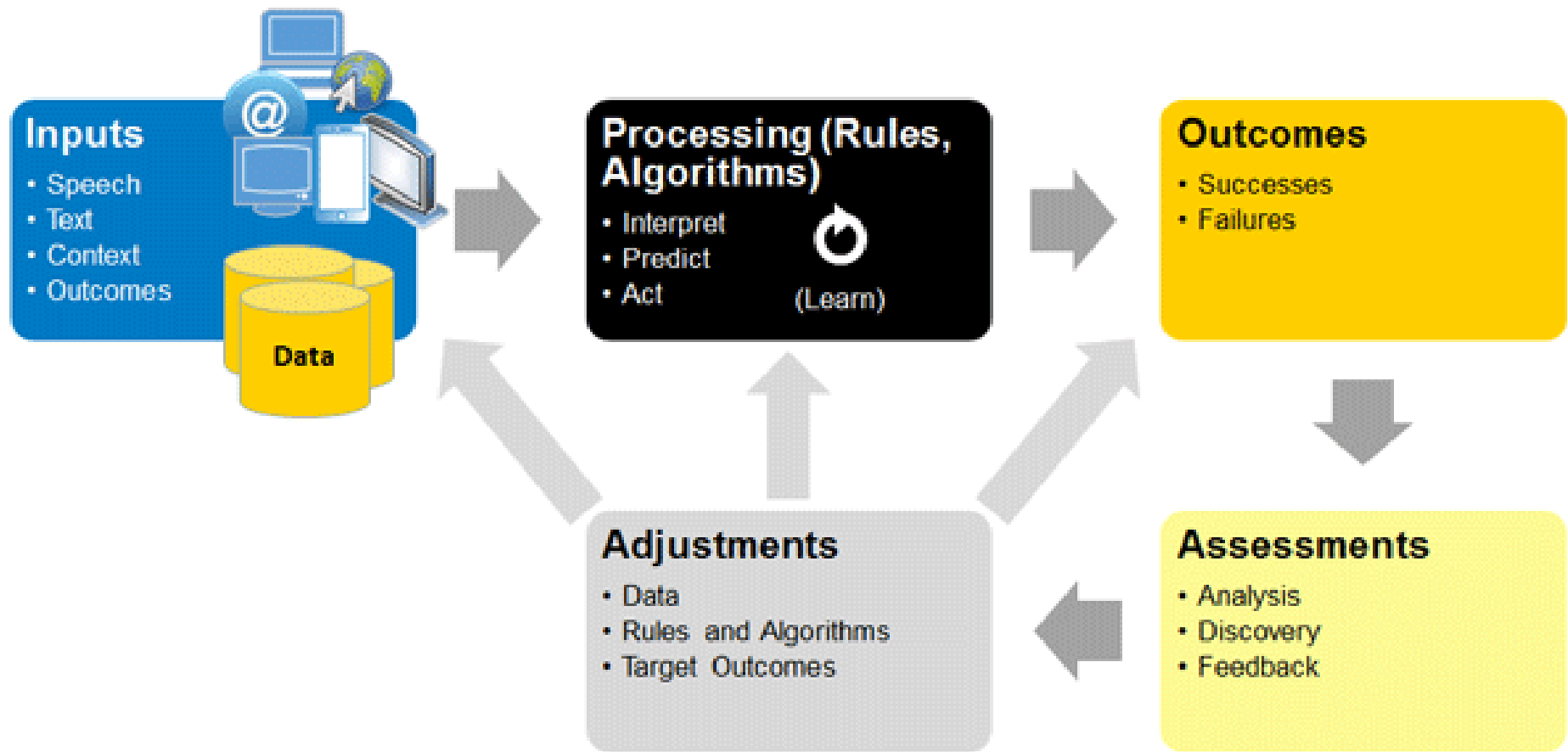
4. Assessments

- Analyze the discovery and give feedback

5. Adjustments

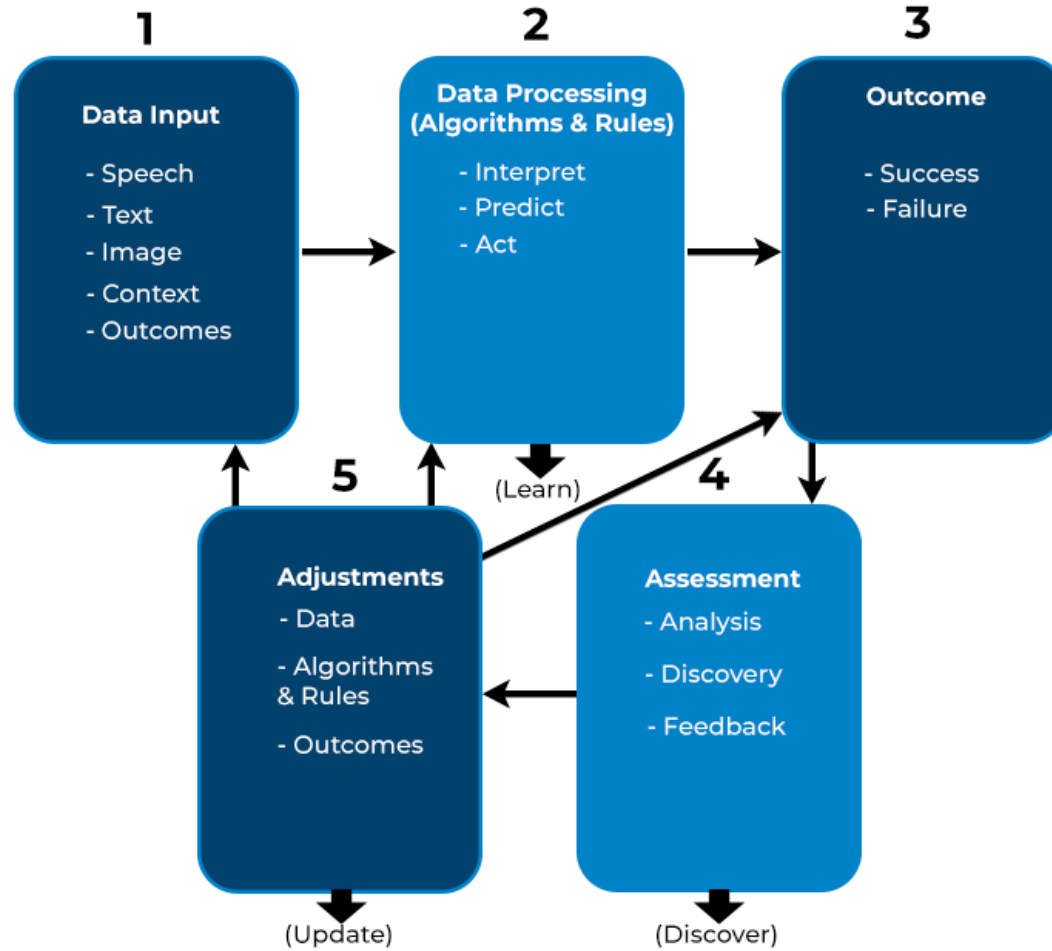
- Give response based on the input and what it learned

How AI works





HOW AI WORKS



***ARTIFICIAL
INTELLIGENCE***

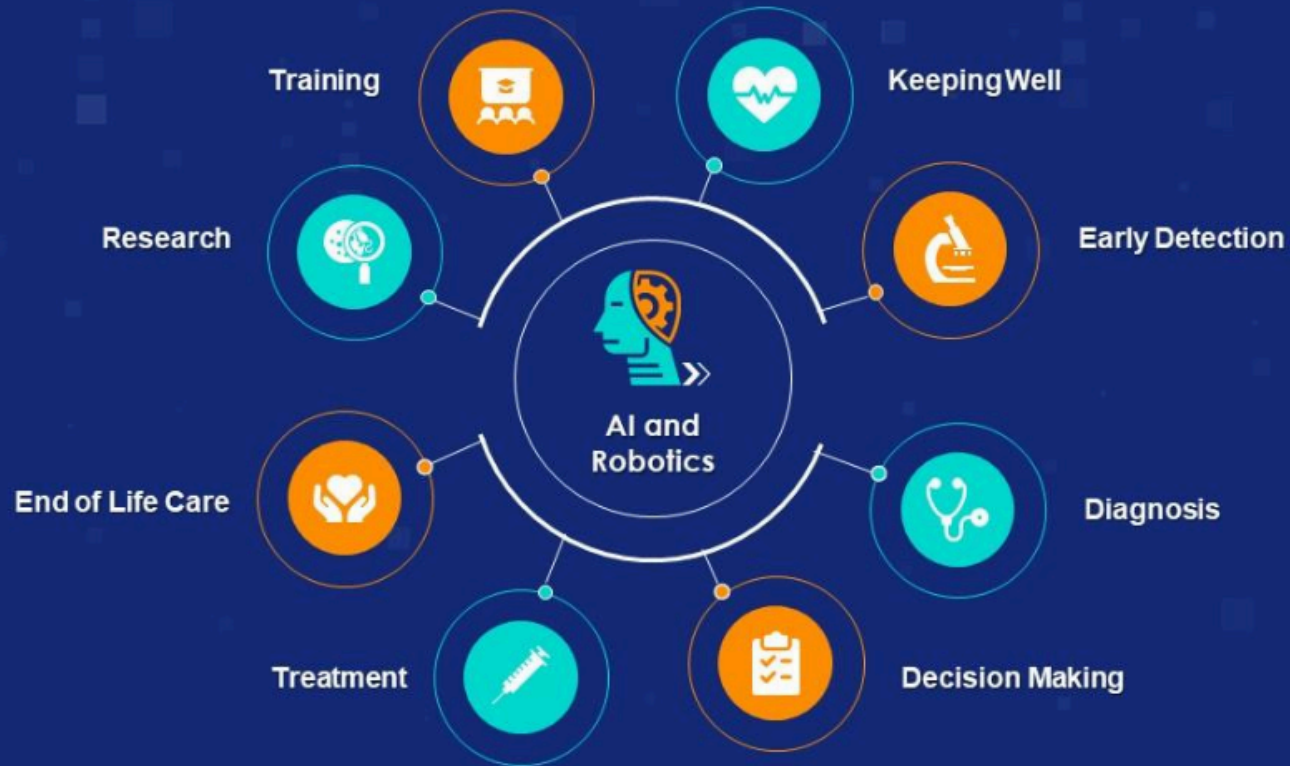
AI technologies are in used in:

- Health Care
- Finance and Banking
- Human Resources
- Transportation
- Manufacturing
- Military
- Customer Service
- Retail
- Entertainment

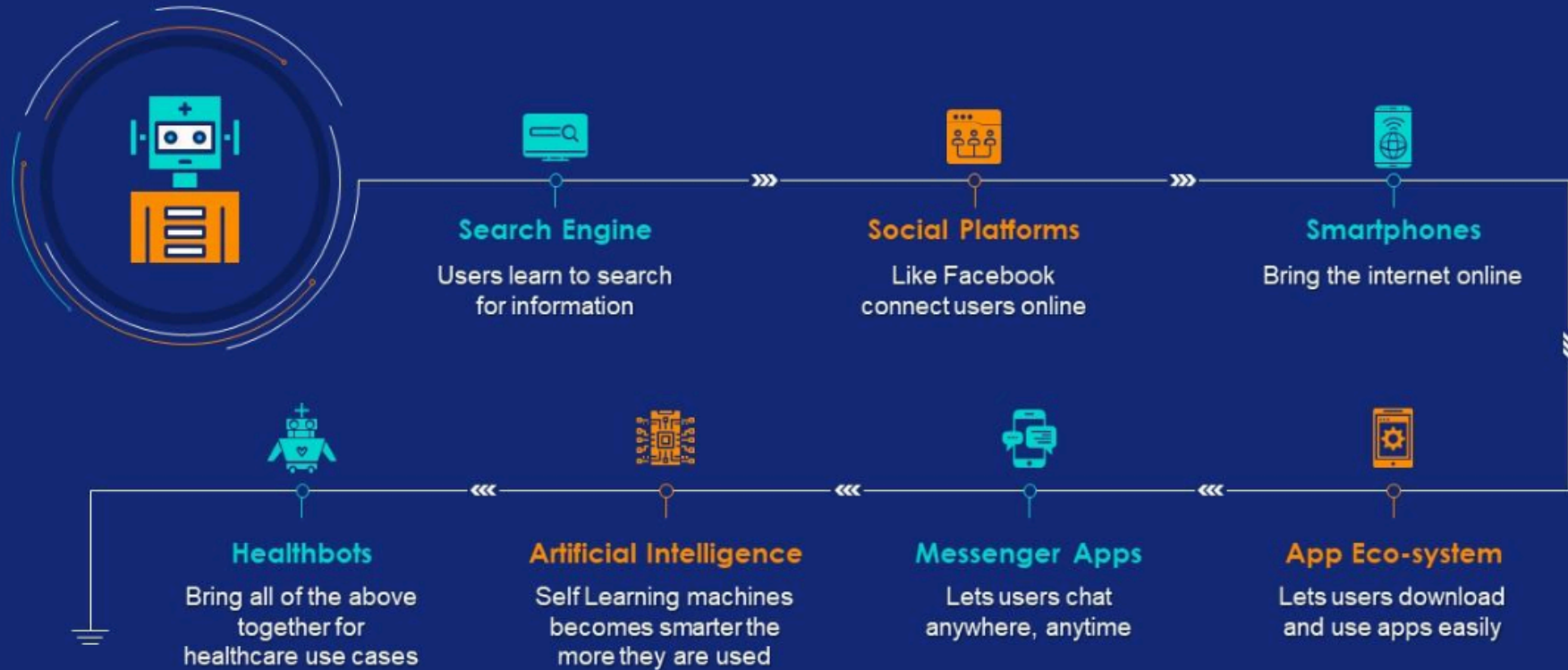
Where is AI used?



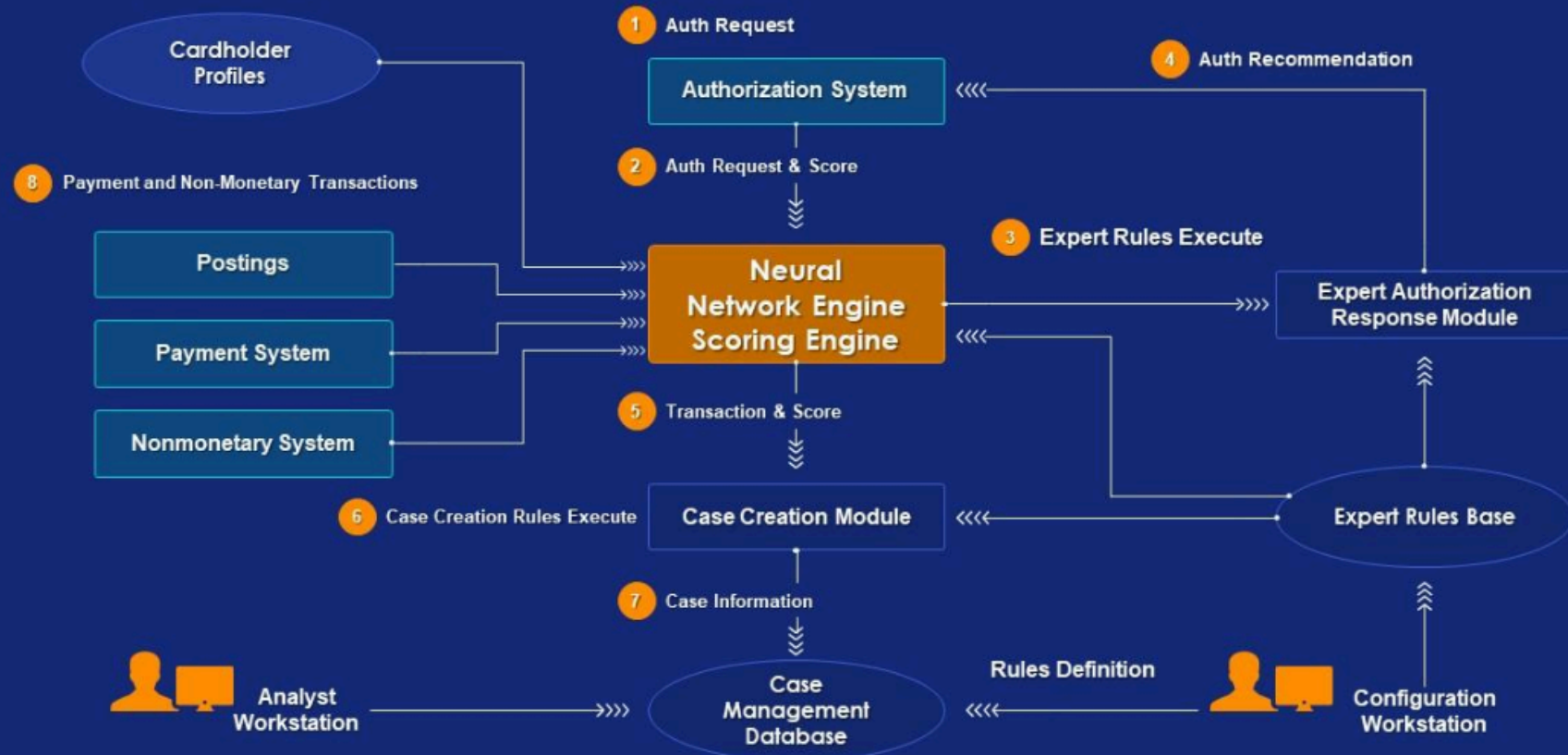
AI UseCase in HealthCare



Ai Chatbots in Healthcare



AI in Banking for Fraud Detection



AI Use Cases in Human Resource



LEARNING

- Curated Training
- Skill Development



RECRUITING

- Dynamic Career Sites
- Smart Sourcing



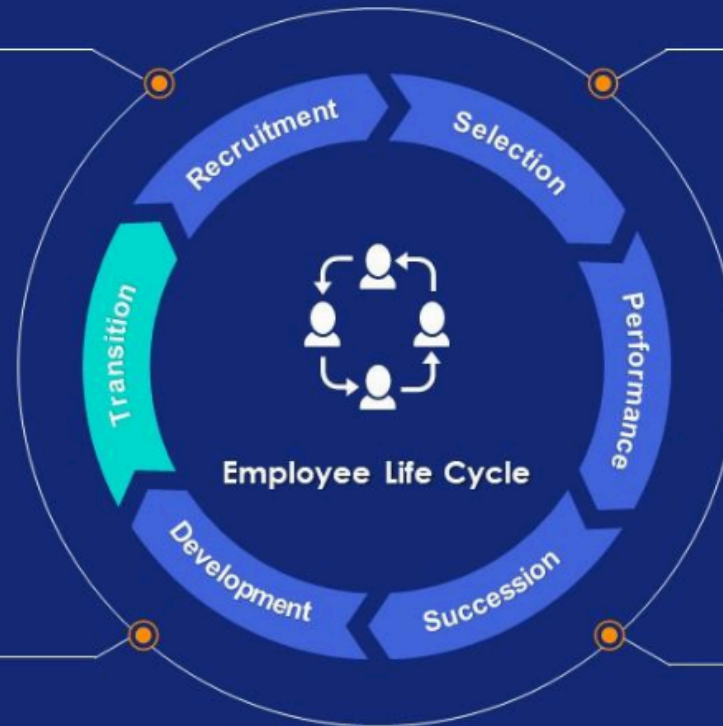
ENGAGEMENT

- HR Chatbot
- Engagement Surveys

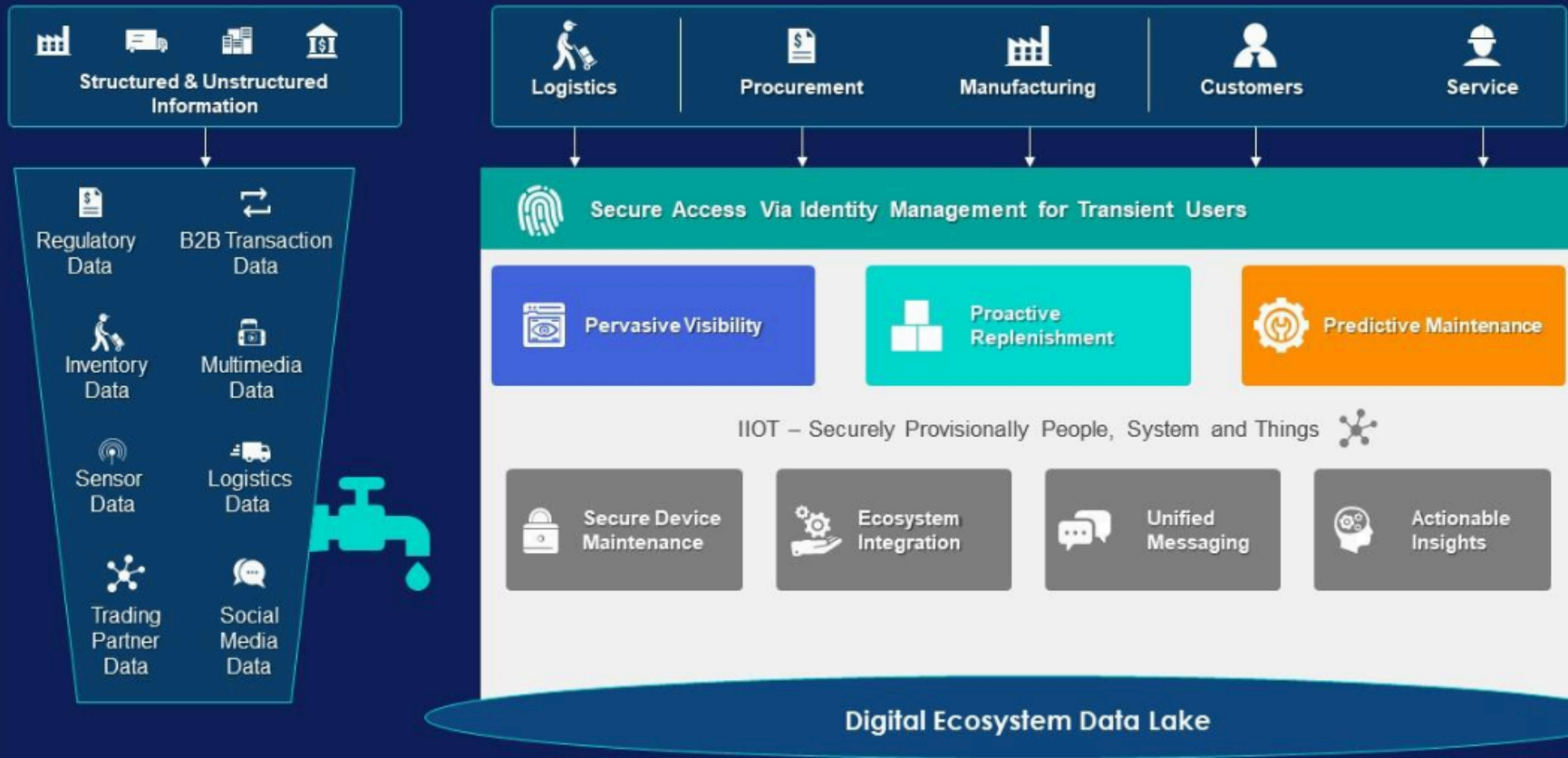


ONBOARDING

- Automated Messages
- Curated Videos



AI in Supply Chain



CONCLUSION

My hypothesis is on trend. AI is advancing at a great speed and shaping our livelihood.



Artificial Intelligence Statistics

- 35 % of businesses have adopted AI
- 77% of devices in use feature some of AI
- 9 out of 10 organizations support AI for a competitive advantage
- AI is predicted to contribute \$15.7 trillion to the global economy in 2030

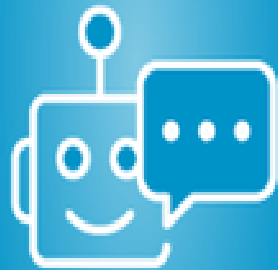
AI in customer service

1



Customer Service
Automation

2



Chatbots

3



Voice Assistants

4



Sentiment
Analysis

5



Machine
Learning

Integrating AI in customer service: A realistic approach

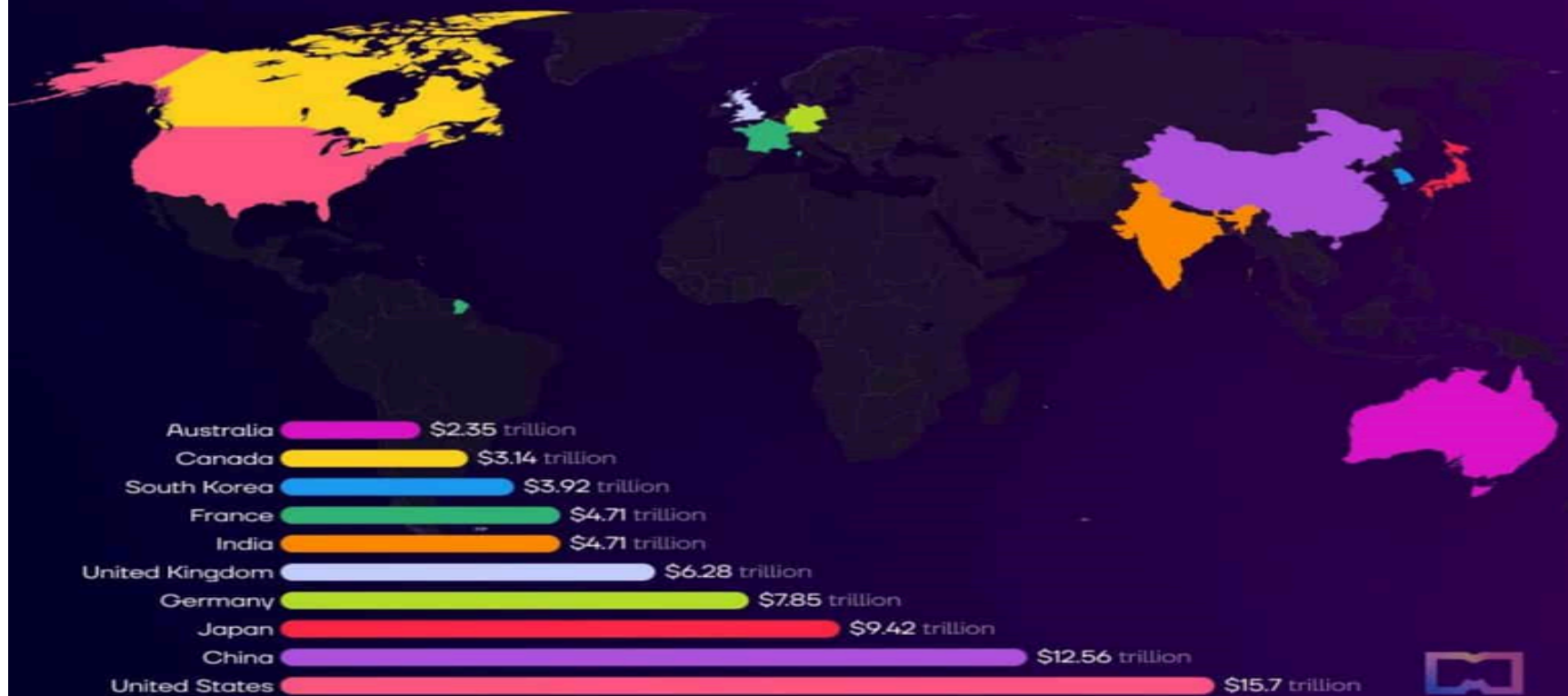


AI transforming health care



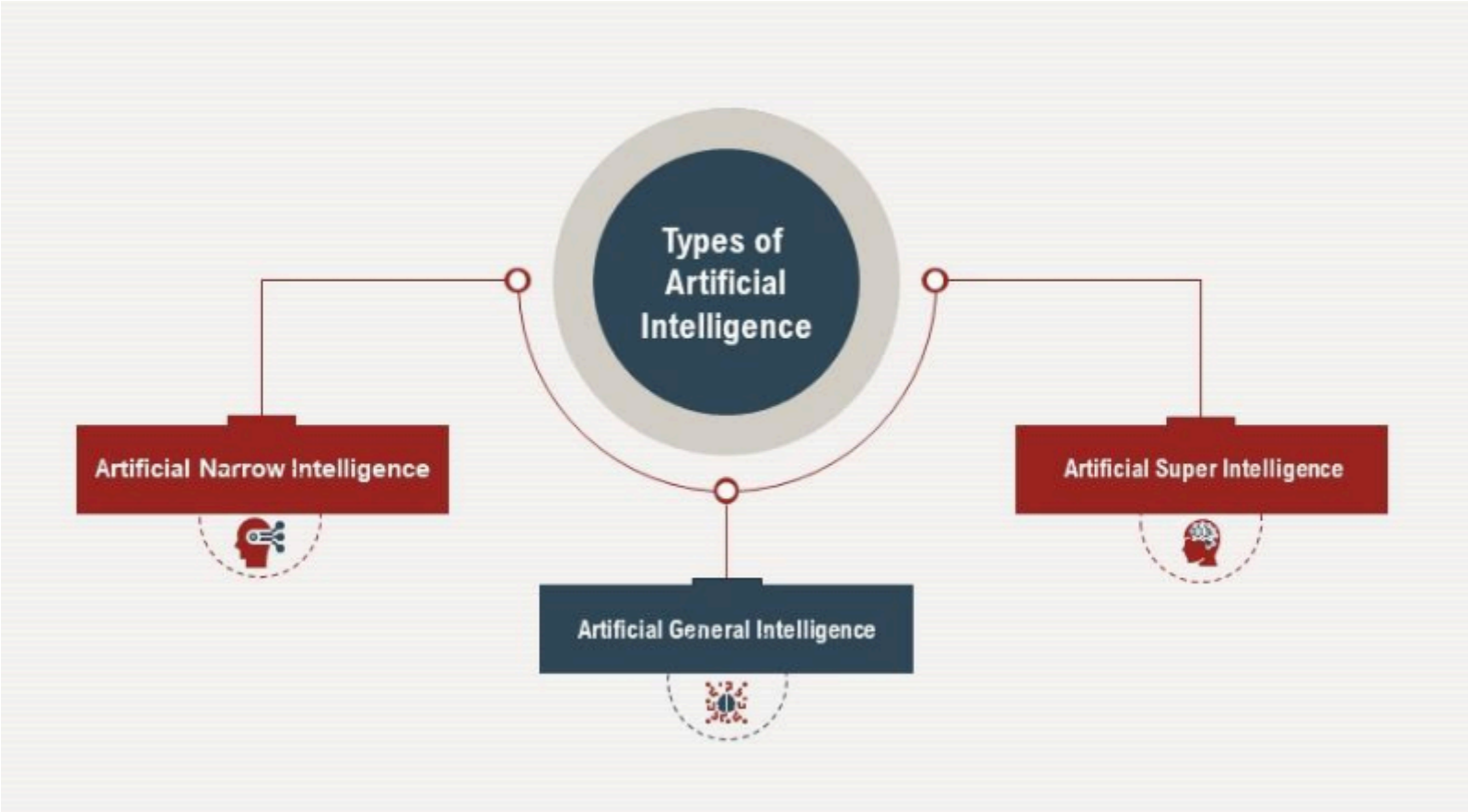
TOP 10 COUNTRIES

Estimated AI Contribution to Economy by 2030

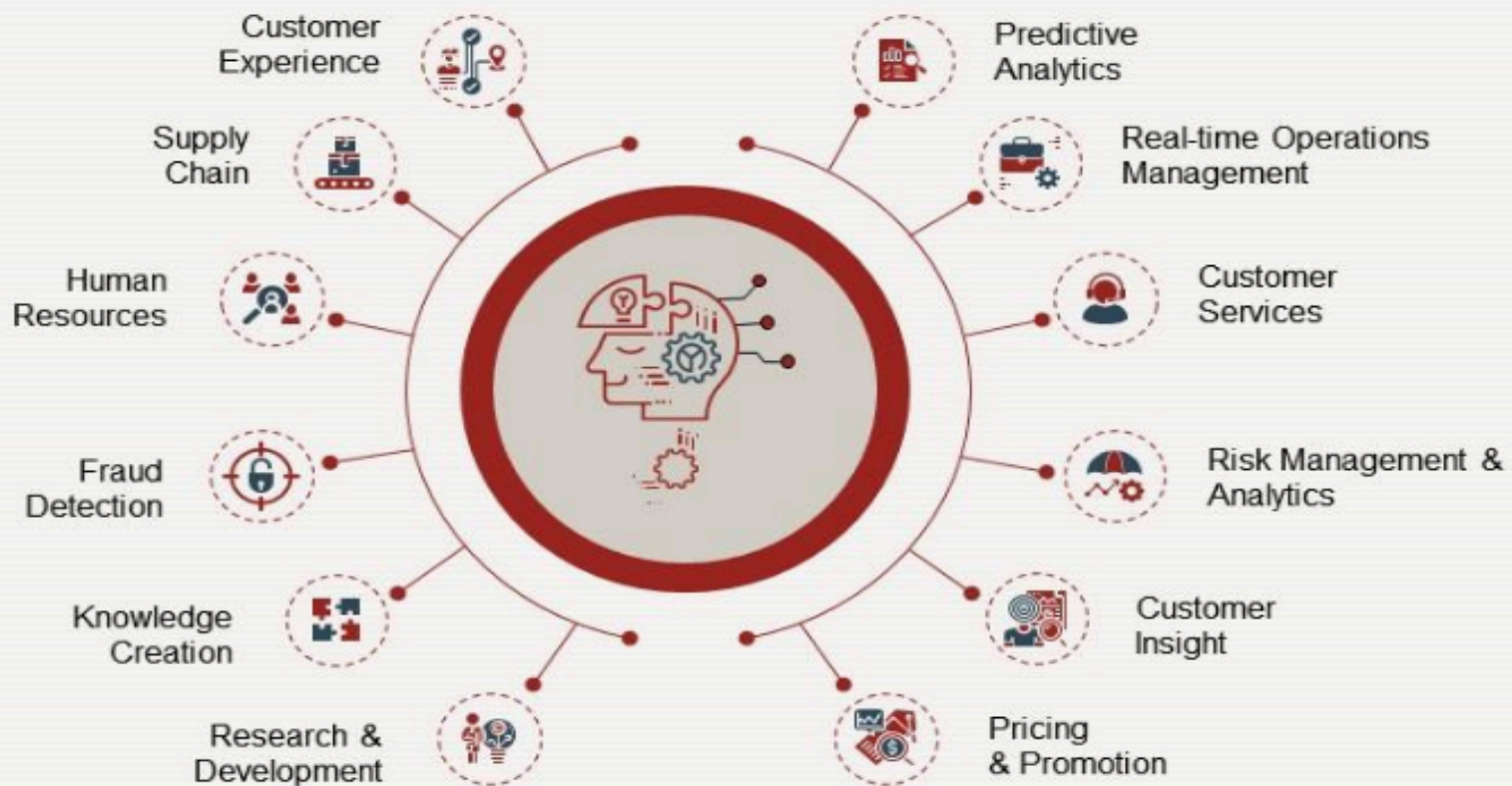


REFERENCES

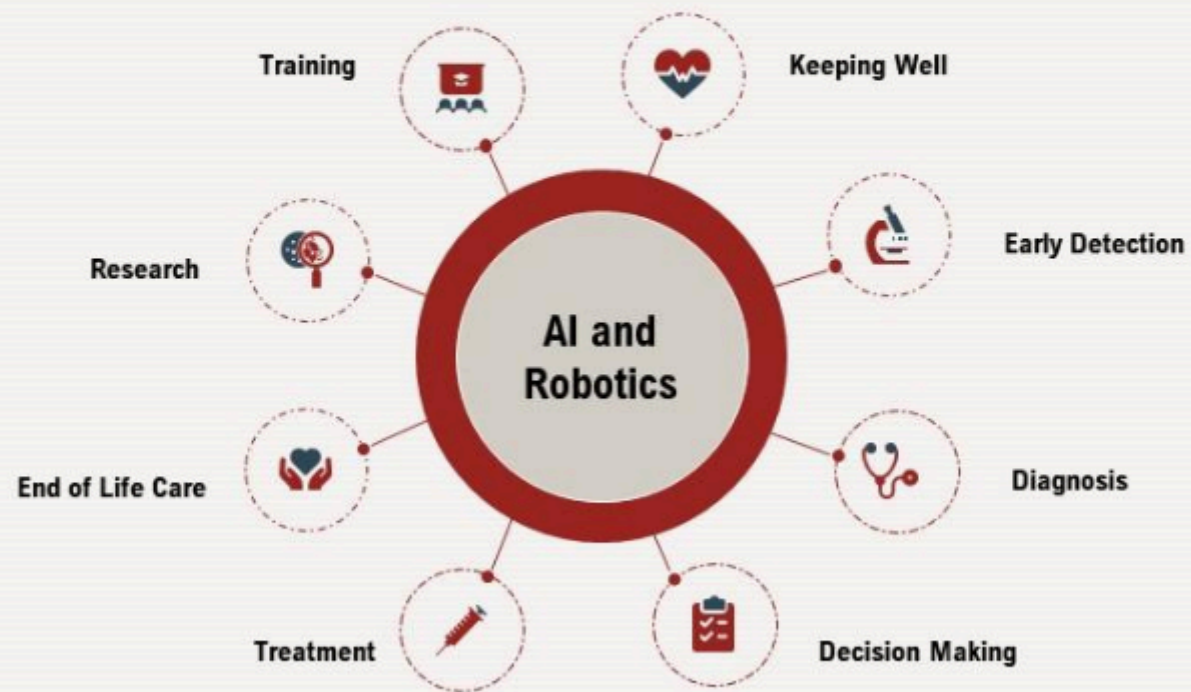
1. <https://www.simplilearn.com/advantages-and-disadvantages-of-artificial-intelligence-article>
2. <https://builtin.com/artificial-intelligence/types-of-artificial-intelligence>
3. <https://www.simplilearn.com/advantages-and-disadvantages-of-artificial-intelligence-article>
4. <https://www.slideteam.net/introduction-to-artificial-intelligence-powerpoint-presentation-slides.html#images-3>
5. <https://www.javatpoint.com/advantages-and-disadvantages-of-artificial-intelligence>



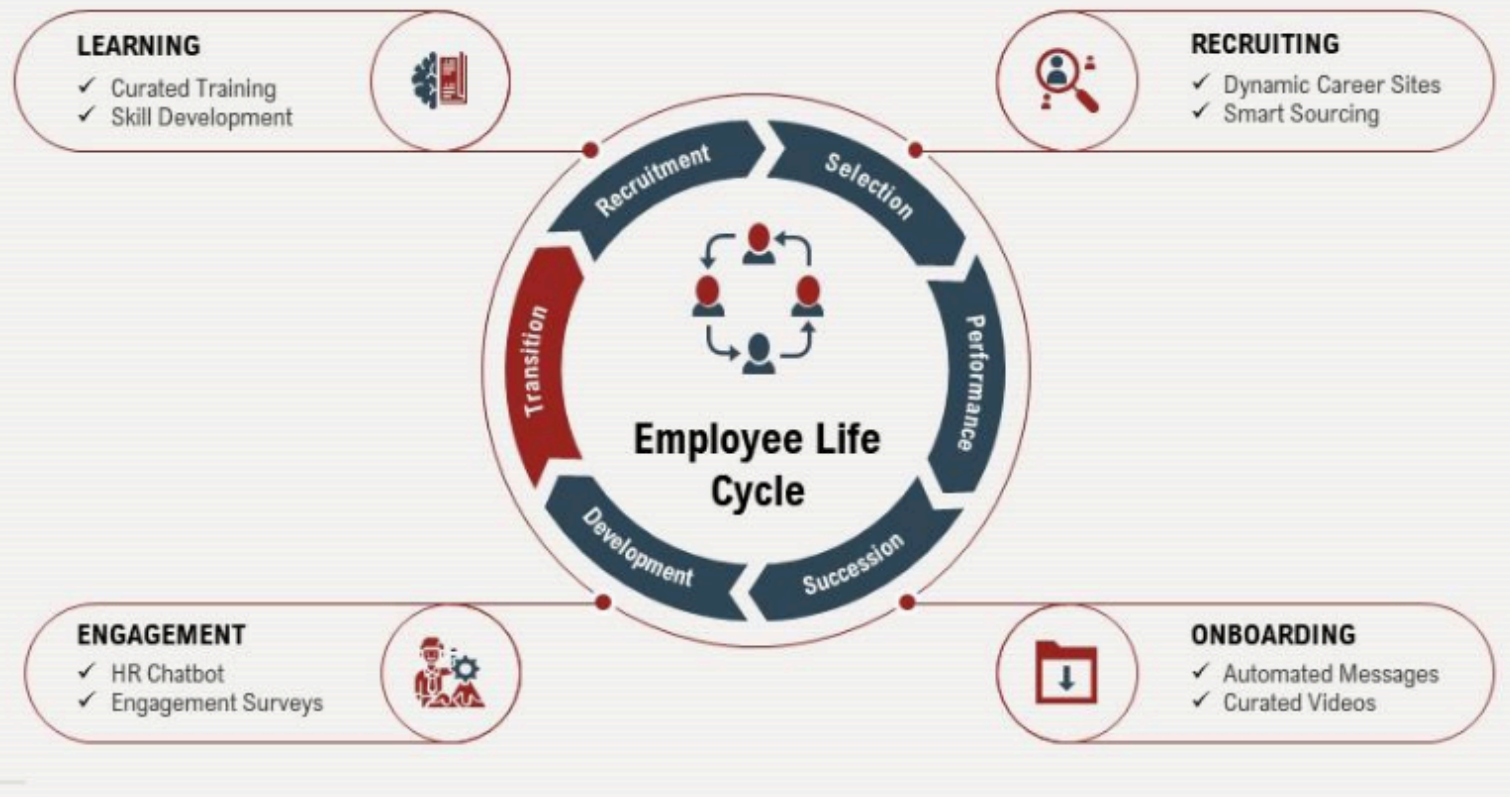
Where is AI used?



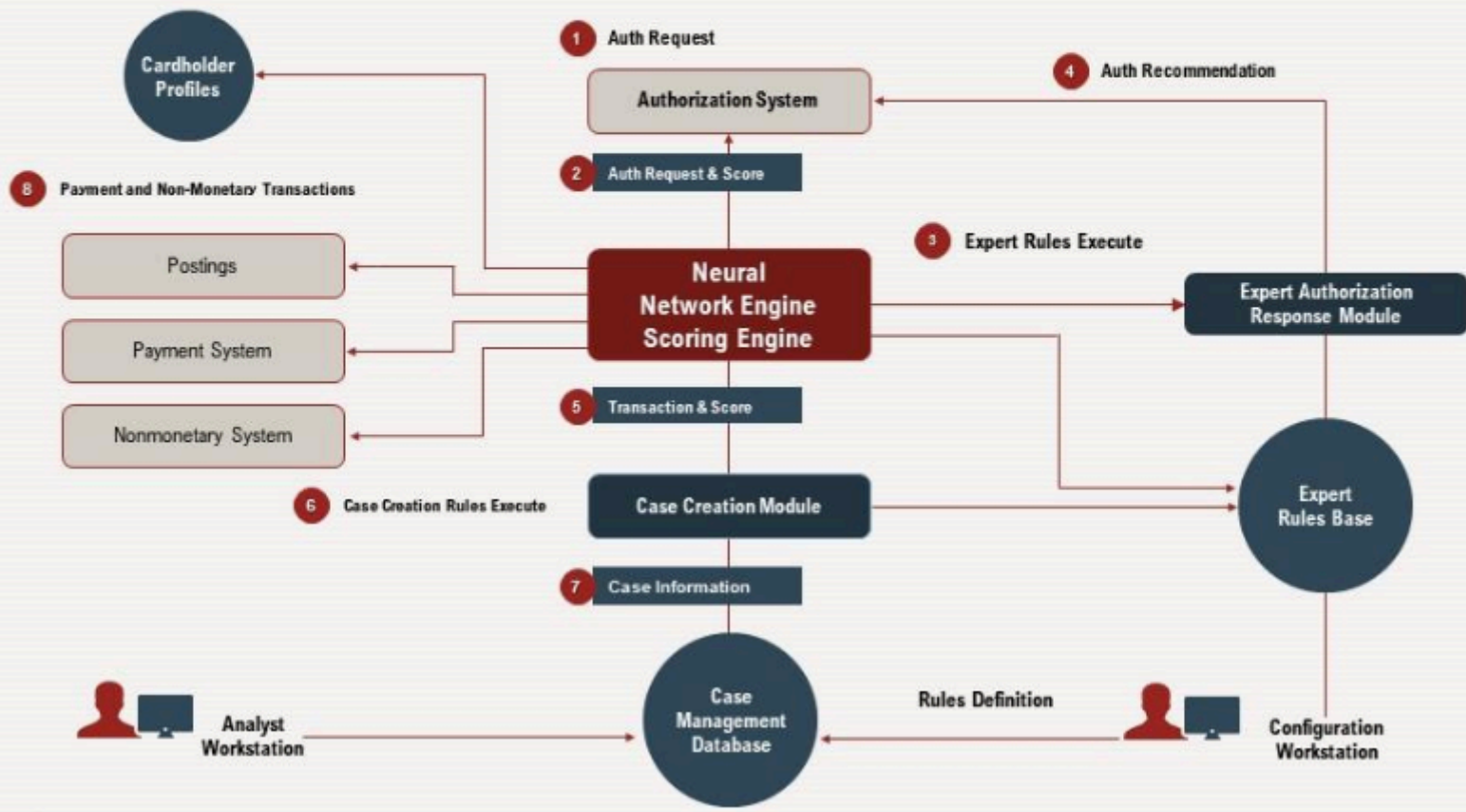
AI Usecase in HealthCare



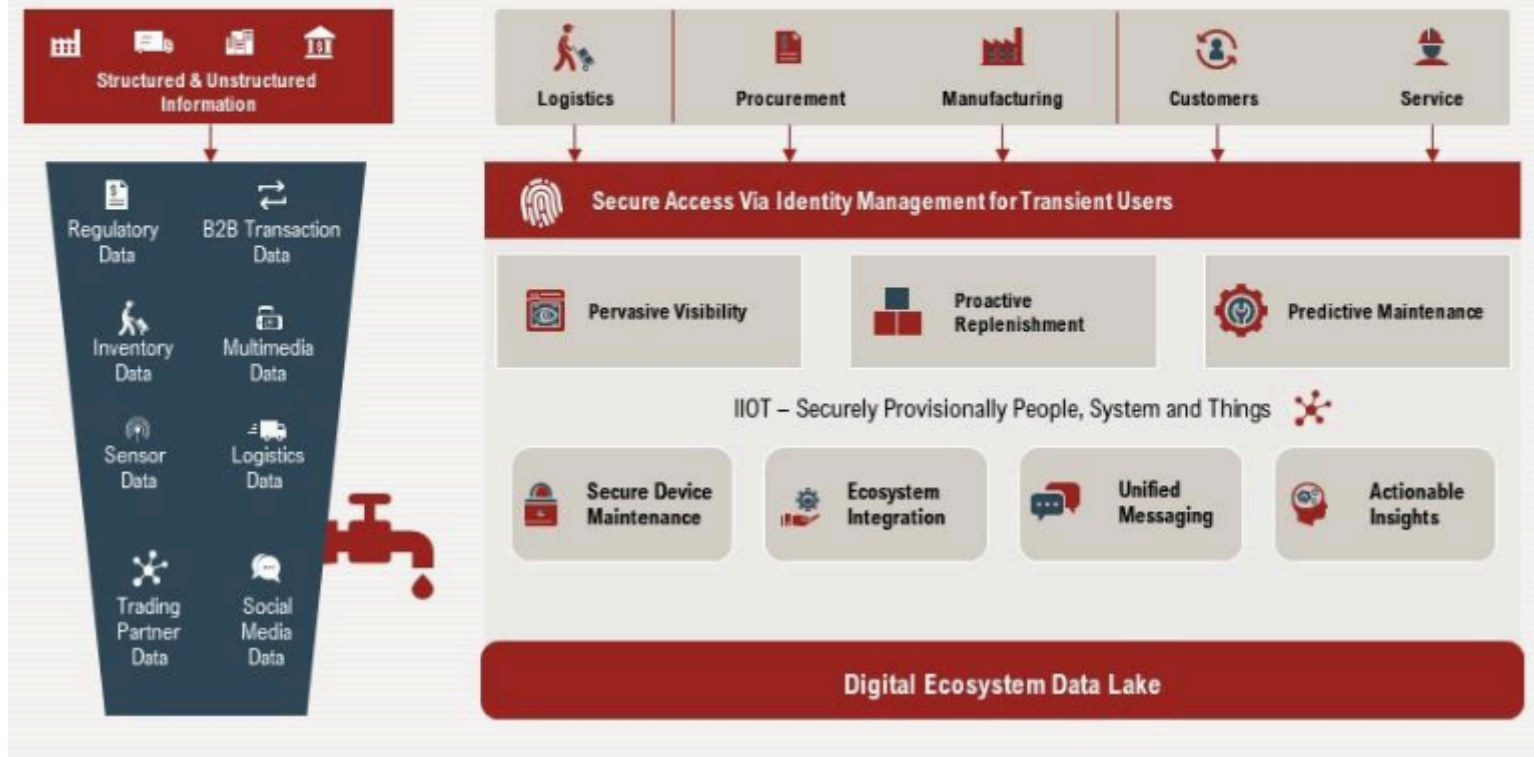
AI Use Cases in Human Resource



AI in Banking for Fraud Detection



AI in Supply Chain



Ai Chatbots in Healthcare

